

SitaWare Maritime C4I

Meeting tomorrow's requirements today



Plans and Orders

Analyse the maritime situation and create the coherent Plans and Orders.



Recognised Maritime Picture (RMP)

Compile and disseminate the RMP by fusing all source information including radar and AIS tracks.



Track Correlation

Enrich the RMP with correlated tracks from multiple AIS and radar sources.



Anomaly Detection

Define detection rules that automatically identify suspicious behavior and anomalies.



Messaging

Collaborate using Military Messaging and chat including full support for formatted messages.



Interoperability with partner systems

Exchange information with maritime allies, coast guard, national army and air commands.

Exceed in-service systems and future-proof your maritime C4I

Monitor, assess, decide, plan and direct

The maritime domain is a complex, three-dimensional operating environment that presents a multitude of challenges to naval commanders. However, SitaWare Maritime provides a solid foundation for operational success by meeting tomorrow's C4I requirements already today. The system gives you a detailed Recognised Maritime Picture (RMP) and brings a comprehensive and collaborative planning functionality – to be used both at maritime operations centres ashore, with task group commanders at sea, and on individual ships.

Plans and Orders

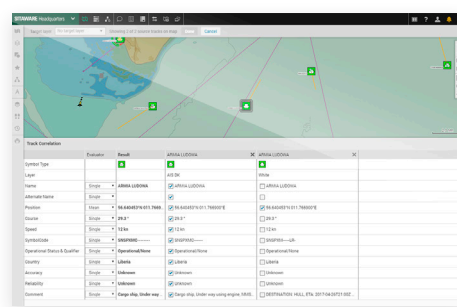
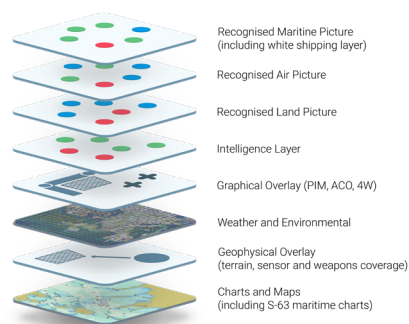
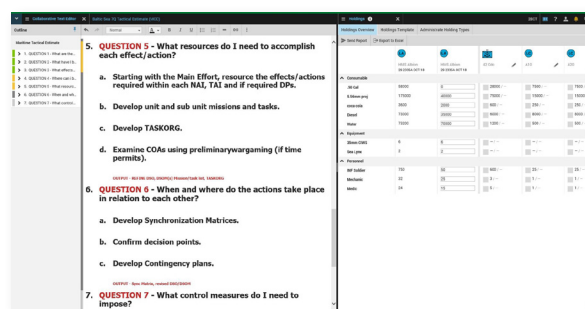
Before any maritime operation can be executed, a thorough estimate and planning must be conducted. SitaWare Maritime comes with a comprehensive Plans and Orders module, which combines the use of a word-editor and tactical overlays in assisting you to conduct a tactical estimate and consecutively creating the plan for the operation. With the plan in hand, the build-in IRIS Forms assists you in drafting and disseminating the required military messages and orders to execute the operation.

Recognised Maritime Picture (RMP)

The lynchpin of every successful maritime operation is total situational awareness of the Surface, Subsurface, and Air pictures. Tracks from coastal and ship based AIS, radar systems, and remote sensors through Tactical Data Links (TDLs) are correlated and displayed in near-real-time. The tracks can be correlated either locally or distributed to a central processing centre for further management. You can configure the RMP to match your exact needs; from monitoring territorial waters and economic exclusion zones at national level to focused Area of Operations (AOO) of a task group. The RMP can include both the classified Military Picture as well as the unclassified civilian White Picture.

Track Correlation

To ensure a high quality RMP, it is vital that the Command is presented with correlated tracks from a wide variety of sources – and that the bulk of tracks information is automatically correlated. That is why SitaWare comes with a mature and proven correlation engine that is capable of handling tracks from multiple AIS and radar sources; that being tracks either received directly from the sensors or received via other C4I, Vessel Traffic System (VTS) or Combat Management system (CMS).



SYSTEMATIC

SitaWare



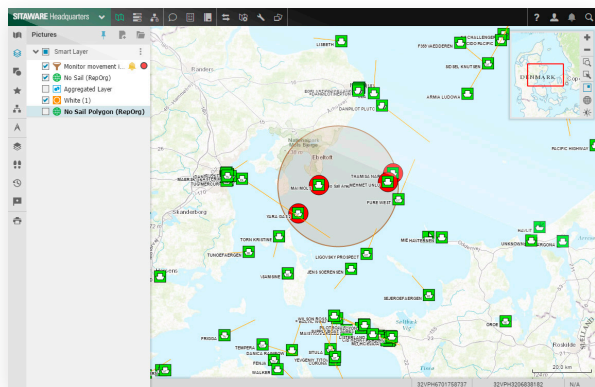
Proven success
Operational in more
than 30 nations



Ready to use
Low risk
Try before you buy

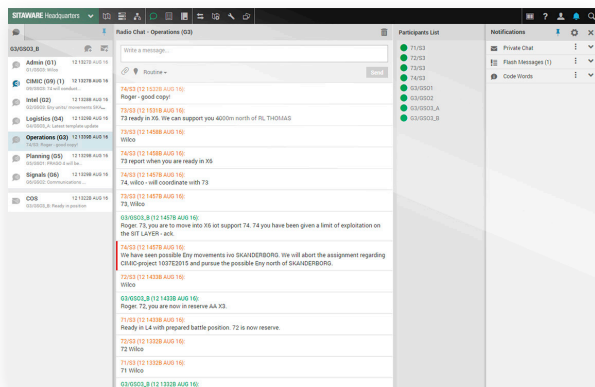


Unmatched interoperability
Proven in numerous operations
and exercises



Anomaly Detection

Early detection of possible threats and illegal activity is essential to a successful mission. Time is always a limiting factor when you need to respond to actual threats. In SitaWare, operators can define detection rules that automatically identify suspicious behavior and notify the Commander about anomalies. This includes vessel of interest sighting as well as tracks entering/leaving defined areas or proceeding outside set parameters.



Messaging

Maintain the operational tempo through the uses of chat and military messages between national units and partners. Exchange military e-mails as well as STANAG 4406 and ACP-127 messages through a plugin to Microsoft Outlook including full support for APP-11, USMTF, and OTH-Gold formatted message templates using IRIS. Take advantage of instant messaging in distributed chat rooms in a XMPP and JChat compliant client compatible with both high and low bandwidth networks.

SitaWare Interoperability	1 APP-11 NATO Message Catalogue ADATP-3	2 OTH-GOLD Over the Horizon GOLD	3 AIS Automatic Identification System Civilian Maritime Tracking
4 WAIS Warship Automatic Identification System	5 USMTF United States Message Text Format	6 LINK 11 Tactical Digital Information Link	7 LINK 16 SIMPLE Standard Interface for Multiple Platform Link Evaluation
8 LINK 16 JREAP Joint Range Extension Applications Protocol	9 ADS-B Automatic dependent surveillance – broadcast	10 ASTERIX CAT 048 Surveillance Data Exchange	11 NVG NATO Vector Graphics
12 KML Keyhole Markup Language Export to e.g. Google Earth	13 NFFI NATO Friendly Force Information	14 MIP Multilateral Interoperability Programme Baselines 2, 3.0, 3.1 C2IEDM & JC2IEDM	15 VMF US Variable Message Format

Interoperability with partner systems

Maritime commands often need to coordinate operations with air and land commands, coalition partners, coast guard or other civilian and governmental agencies. This coordination requires the ability to exchange information with partner systems. SitaWare lets you exchange tracks, plans/orders, and messages in a wide range of formats such as APP-11, OTH-Gold, AIS, WAIS, USMTF, Link 11, Link 16 SIMPLE, Link 16 JREAP, ADS-B, Asterix CAT 048, NVG, KLM, NFFI, VMF and MIP.



High quality user experience
 Easy to use
 Low training costs



Low deployment cost
 Deploy on standard
 Windows hardware



Open architecture
 APIs for e.g. extending and
 integrating radars and sensors



Active roadmap
 Customers share cost of future
 updates and new capabilities

systematicdefence@systematic.com

SitaWare Maritime